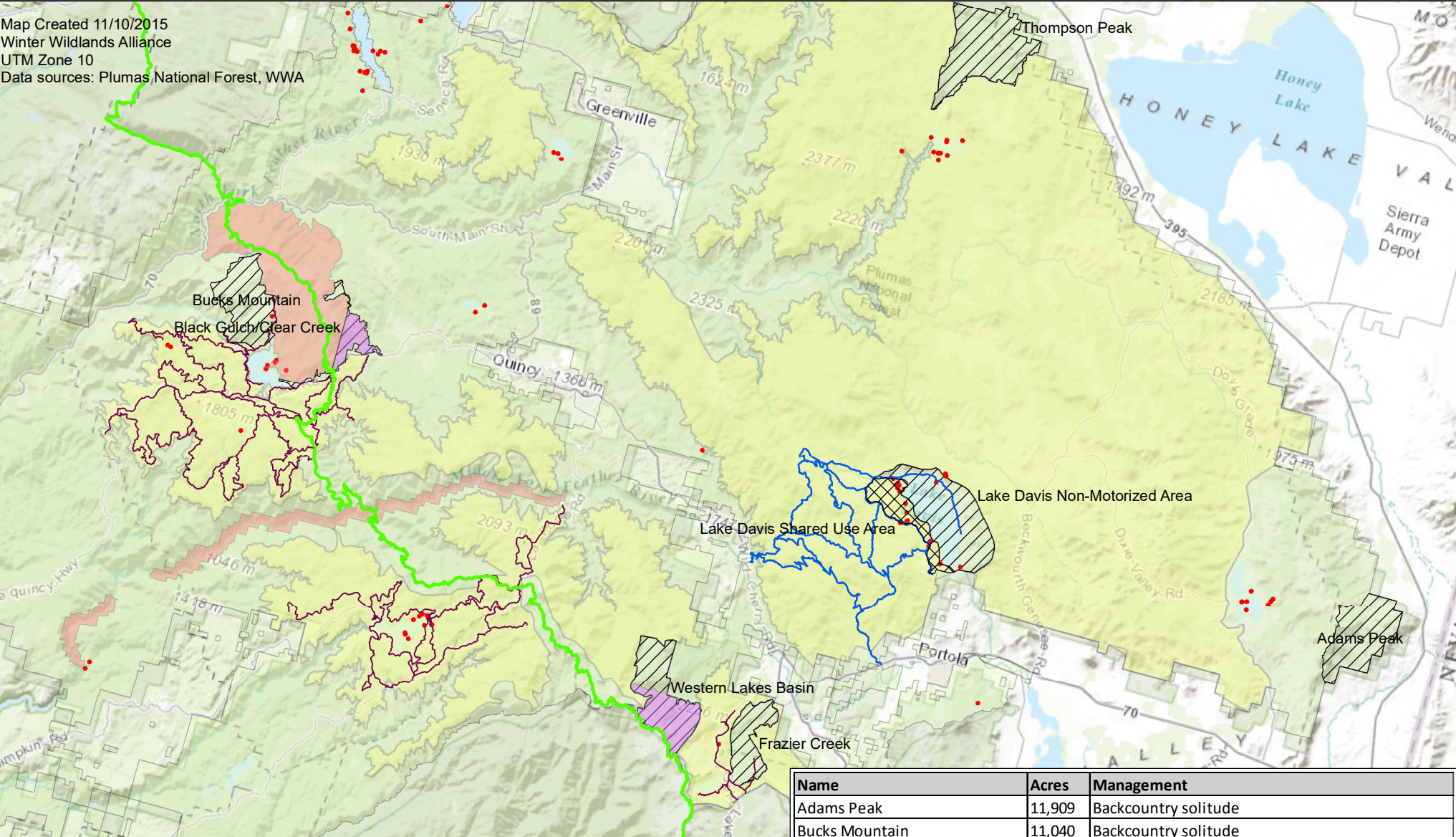


Winter Recreation Management on the Plumas National Forest

Map Created 11/10/2015
Winter Wildlands Alliance
UTM Zone 10
Data sources: Plumas National Forest, WWA



Snowlands/WWA Proposed Management

- Important Non-Motorized Recreation Areas
- Potential OSV Open Areas
- Shared Use - voluntary BAT restrictions

Elements From Plumas NF Proposed Action

- Pacific Crest Trail
- Proposed Action Potential Groomed OSV Trail
- Proposed Action Closures
- Existing OSV Trail
- Existing Non-Motorized Areas
- Proposed Action Restricted Bald Eagle Nest Area

Name	Acres	Management
Adams Peak	11,909	Backcountry solitude
Bucks Mountain	11,040	Backcountry solitude
Black Gulch/Clear Creek	4,510	Frontcountry non-motorized
Lake Davis Non-Motorized Area	17,342	Frontcountry non-motorized
Thompson Peak	16,694	Frontcountry non-motorized
Western Lakes Basin	12,124	Frontcountry non-motorized
Frazier Creek	6,857	Shared use area - OSVs on designated routes only
Lake Davis Shared Use Area	6,080	Shared use area - voluntary BAT restrictions

SEBCO, USGS, FAO, NPS,
TI, Esri China (Hong Kong),
or Community